

## Sony Battery Pack Voluntary Replacement Program

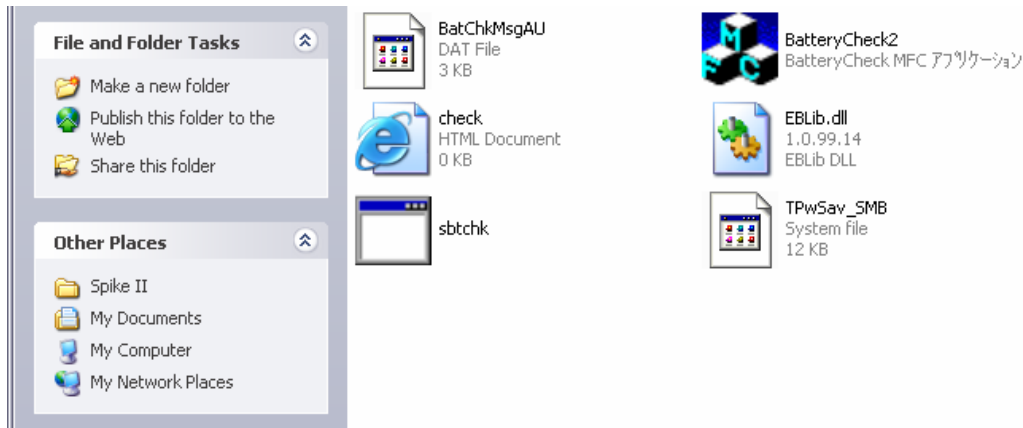
This document explains how to install and run the Battery Check Utility for the Sony Battery Pack Voluntary Replacement Program. For more information, please click on the below link

[http://www.isd.toshiba.com.au/71/live.dll/topic/content/ed\\_content.jsp?CATOID=-15060&LISTOID=80445&contentType=EDITORIAL&LISTYPE=True](http://www.isd.toshiba.com.au/71/live.dll/topic/content/ed_content.jsp?CATOID=-15060&LISTOID=80445&contentType=EDITORIAL&LISTYPE=True)

### Running the Battery Pack Check Utility

- 1) Unzip the utility onto your hard drive.

The following files will be extracted.



- 2) Execute the Battery Pack Check Utility by clicking on “BatteryCheck2” icon.

A message to confirm that the battery pack is properly connected will appear. Click [OK] to continue.

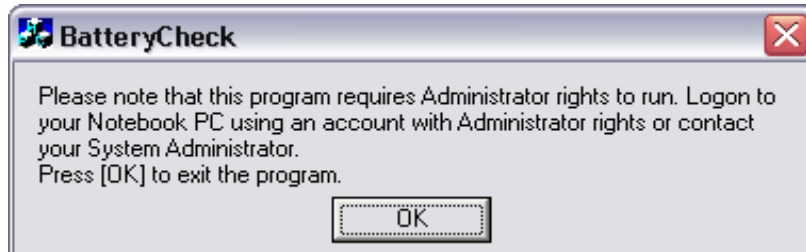


There are three possible outcomes depending on your configuration.

- a) Requirement of Administrative rights to execute the Battery Pack Check Utility
- b) Identification of non-affected battery pack.
- c) Identification of affected battery pack.

3a) Requirement of Administrative rights to execute the Battery Pack Check Utility

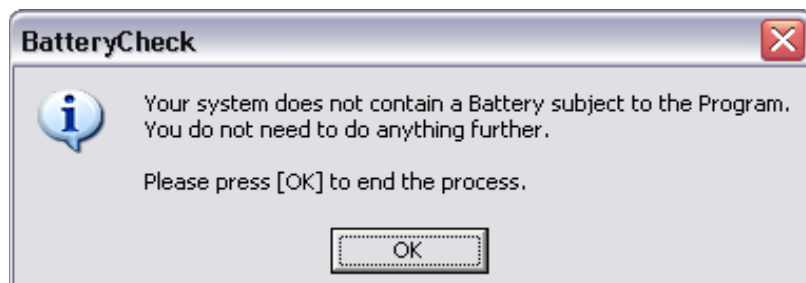
Execution of the Battery Pack Check Utility can only be performed when a user with administrator rights is logged on. If you do not have administrator rights, the below message will be displayed and the Battery Check Utility will terminate.



Logon to your Notebook PC using an account with Administrator rights and then run the Battery Check Utility again. If you do not have Administrator rights to your notebook, please contact your System Administrator.

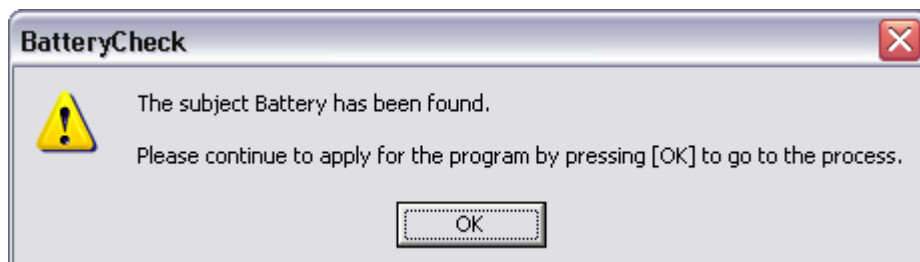
3b) Identification of non-affected battery pack.

If a non affected battery pack is identified, the below message will be displayed "Your system does not contain an affected battery." No further action is required. Press [OK] to end the process.



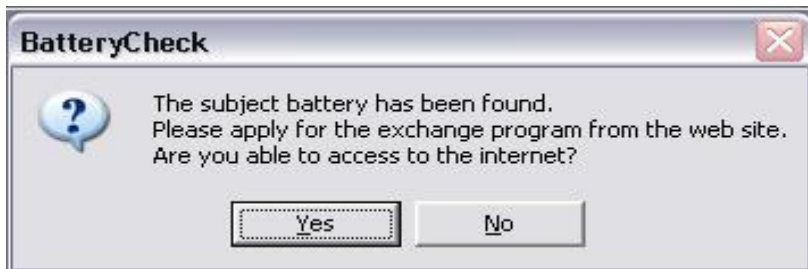
3c) Identification of affected battery pack.

If an affected battery pack is identified, the below message will be displayed. Click [OK] to continue.



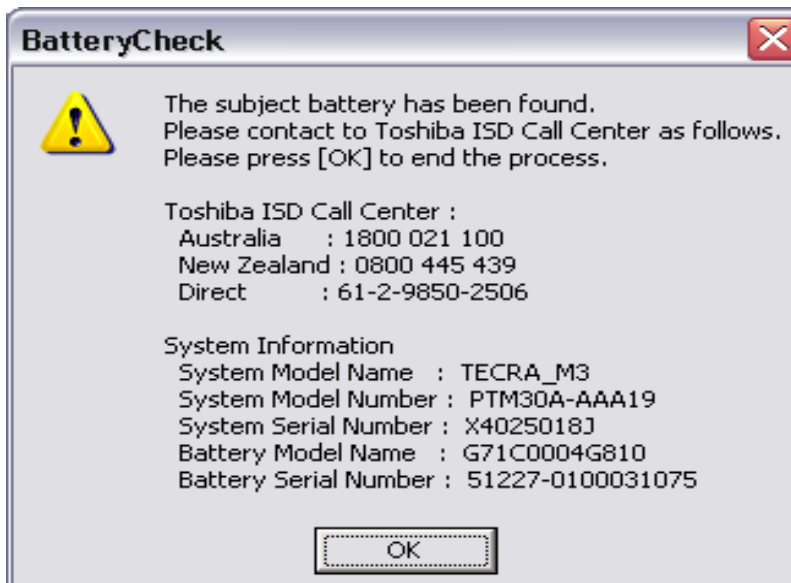
If you are connected to the internet, you will be directed to the online registration page. Please follow the instructions on the website.

If you don't have internet connectivity, the following screen will be displayed



If you are able to connect, click [Yes]. You will now be required to re-run the program.

If you are unable to connect, click [No] and the below contact information screen will be displayed.



You will now be required to contact the Toshiba ISD Call Center on the above contact numbers. Please make sure you have the information shown in the above screen ready.