

Toshiba EasyGuard
Carefree Mobile Computing



Toshiba EasyGuard is the better way to enhanced data security, advanced system protection and easy

connectivity. This next-generation computing experience incorporates technologies enabling optimal connectivity and security, Toshiba anti-accident innovations and advanced software utilities for carefree mobile computing.

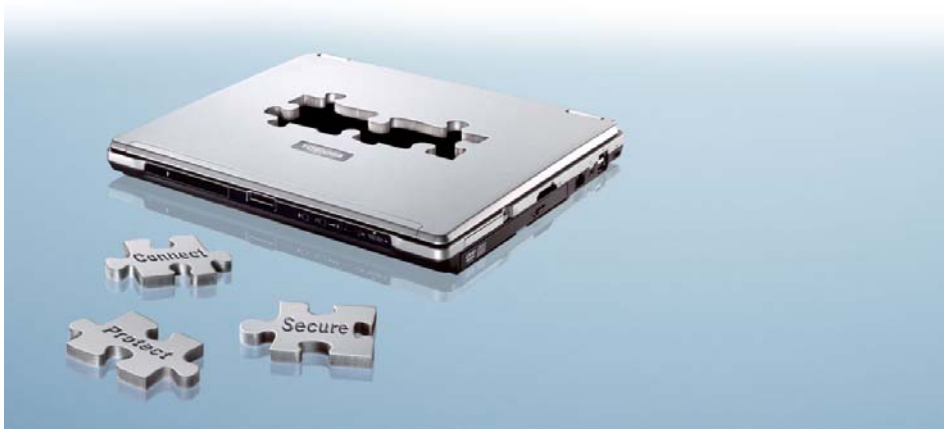
Three core elements for carefree mobile computing

In addressing the need for enhanced data security, advanced system protection and easy connectivity, Toshiba EasyGuard features can be divided into three core elements:

Secure Features that deliver enhanced system and data security

Protect & Fix Protective design features and diagnostics utilities for maximum uptime

Connect Features and software utility that ensure easy and reliable wired and wireless connectivity



What is the Diversity Antenna?

The Diversity Antenna is in reality three antennae. Selected Toshiba notebooks now have two Wi-Fi™ antennae and one Bluetooth™ antenna incorporated into the top lid of the LCD display as well as automatic antenna selection that provides users with optimal wireless connectivity.



How it works

The two Wi-Fi™ antennae are located on top of the LCD in order to maximise signal reception and to prevent interference from a user's table, desk or peripheral devices. The Diversity Antenna has dual-band support (2.4 GHz and 5 GHz), increasing the likelihood of connecting easily since the notebooks can connect across two frequency bands.

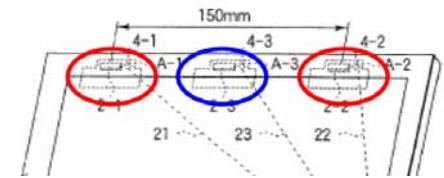


Diagram showing the positioning of the two Wi-Fi™ antennae and one Bluetooth™ antenna on LCD display..

The notebook can monitor the signal level received from both antennae and choose the one with the higher signal level. In addition, there is also a Bluetooth™ antenna located between the two Wi-Fi™ antennae so that users can connect via both Bluetooth™ and Wi-Fi™ simultaneously.

Finally, the Diversity Antenna means that whichever antenna is receiving the stronger signal is the one the notebook will choose, providing users with a reliable and optimal network connection.

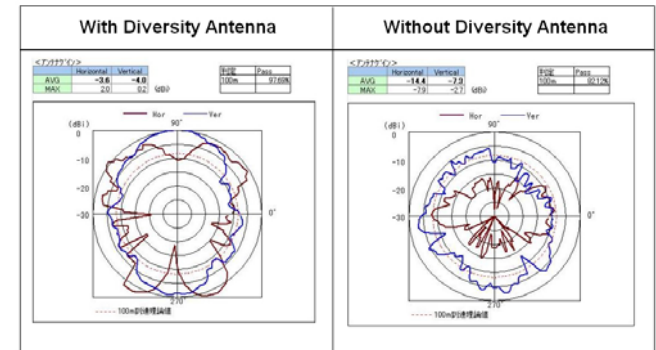


Diagram from results of Toshiba laboratory testing showing that the Tecra A2 achieved better horizontal (red line) and vertical (blue line) wireless network coverage at the 2.4 GHz band.

Summary of features and benefits

- ▶ **Two Wi-Fi™ antennae** Increases the reliability and stability of wireless connectivity
- ▶ **Antennae in top lid of LCD display** Prevents signal interference from users' desk, hands, etc
- ▶ **Dual-band antennas** Makes it easier to connect quickly and maintain stable performance
- ▶ **Bluetooth™ antenna between the two Wi-Fi™ antennae** Maintains the diversity effect and maximises the user's ability to connect quickly and easily